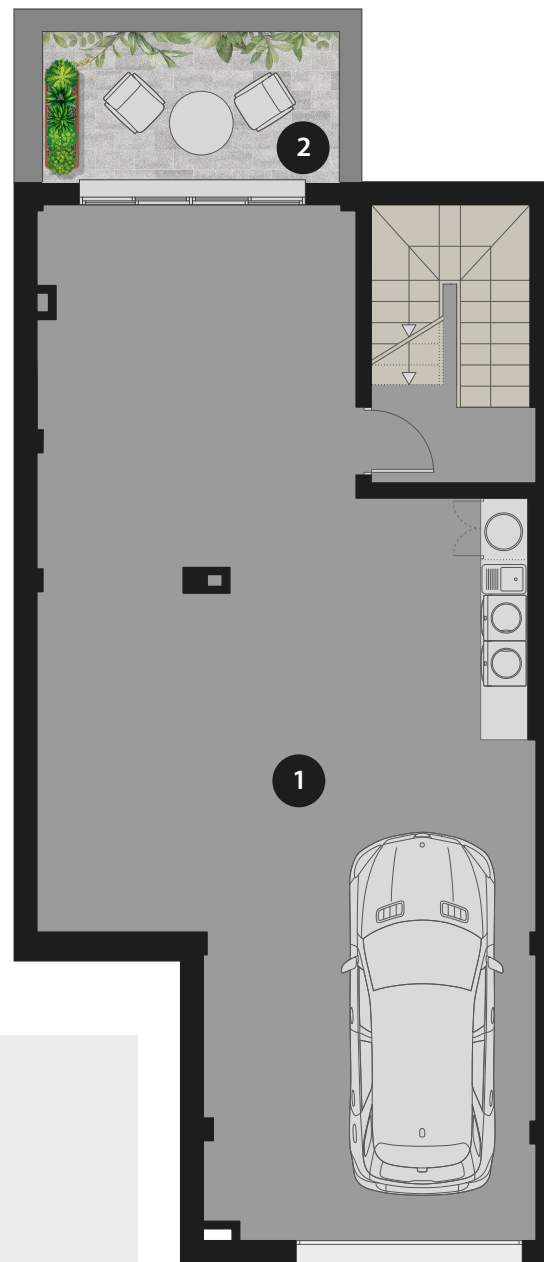


Plot

SCALE 1:200



Plot	
Plot	400,00 m ²
Garden	295,00 m ²
Pool	24,50 m ²
Ground Floor area	86,65 m²
First Floor area	63,75 m²
Basement area	94,15 m²
Total built	244,55 m²



Basement

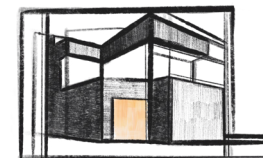
Basement	
1 Garage	71,60 m ²
2 Patio	7,90 m ²
Total floor area	94,15 m²

SCALE 1:100



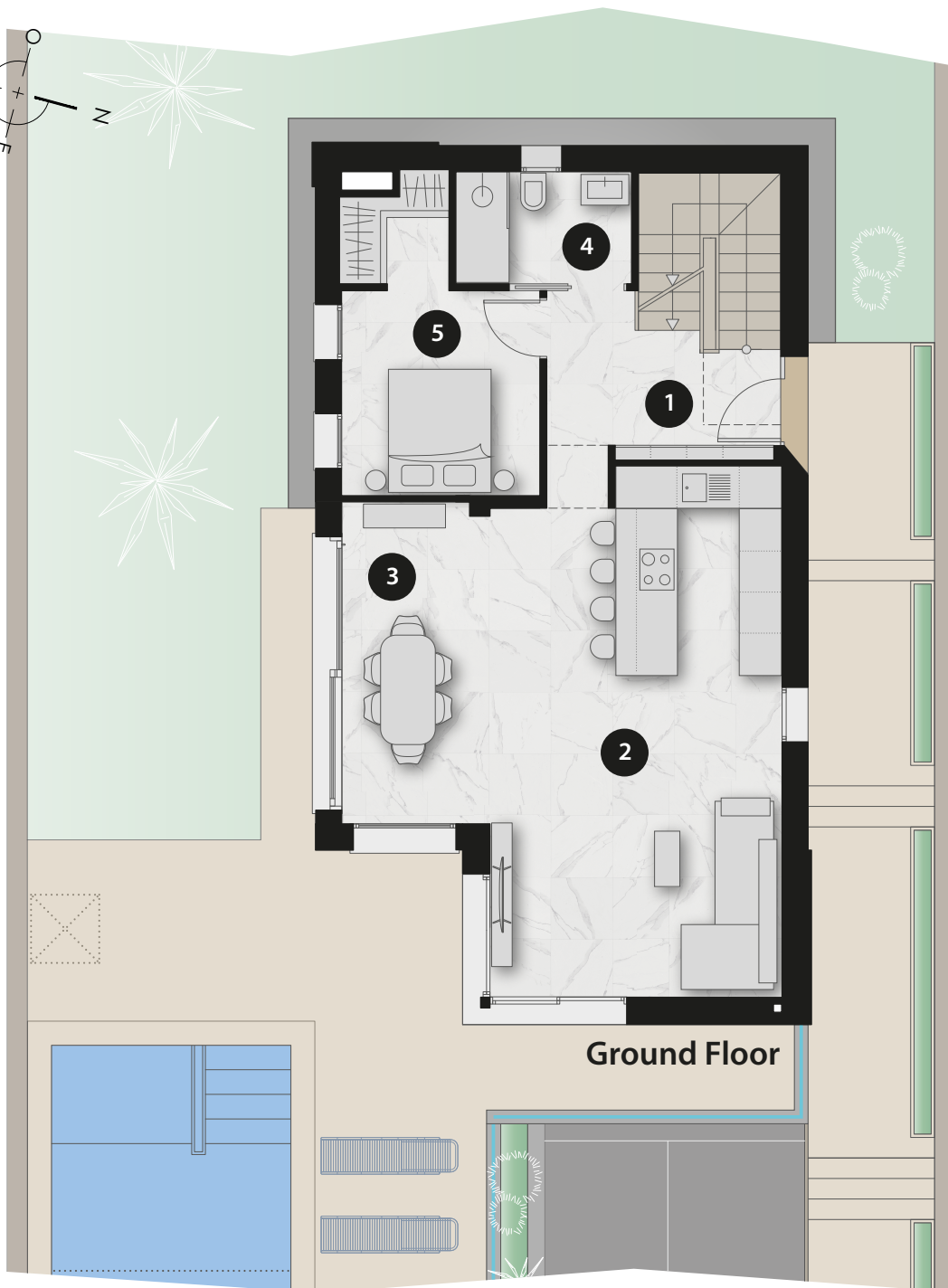
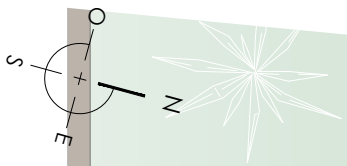
Finestrat Hills

RESIDENTIAL



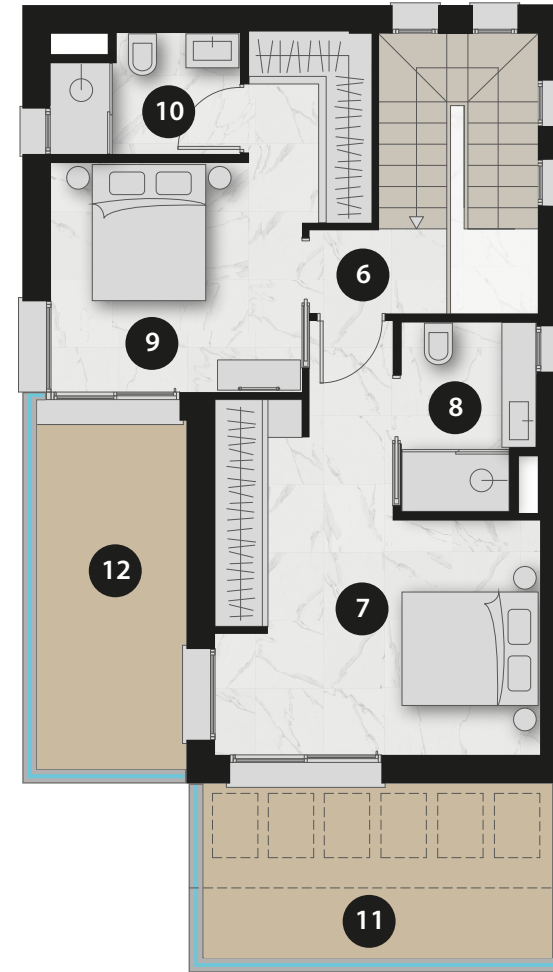
ALTER STYLE URBANA





Ground Floor

SCALE 1:100



First Floor

Ground Floor

1 Hall	6,65 m ²
2 Living room - Kitchen	32,00 m ²
3 Dining room	10,20 m ²
4 Bathroom	4,05 m ²
5 Bedroom	11,10 m ²
Total floor area	86,65 m²

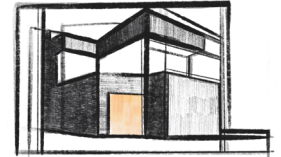
First Floor

6 Hallway	2,00 m ²
7 Bedroom	18,10 m ²
8 Bathroom	4,15 m ²
9 Bedroom	13,60 m ²
10 Bathroom	3,65 m ²
11 Terrace	10,55 m ²
12 Terrace	9,05 m ²
Total floor area	63,75 m²



Finestrat Hills

RESIDENTIAL



ALTER STYLE URBANA

